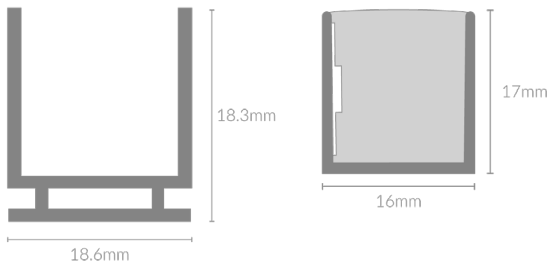
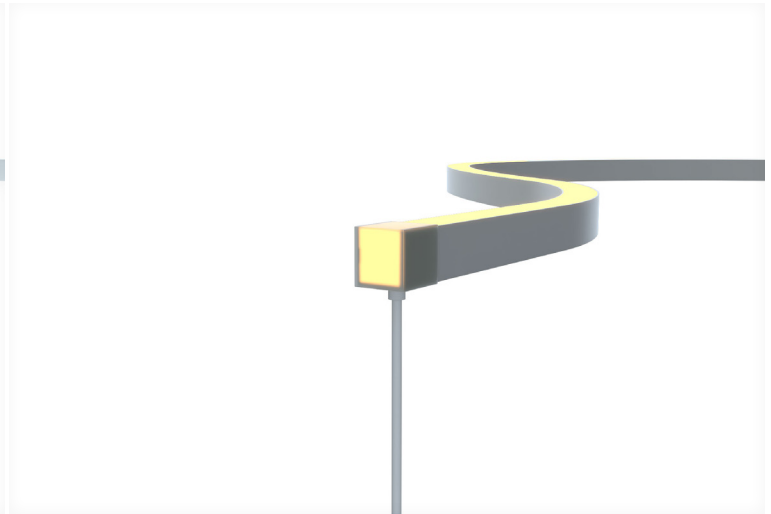
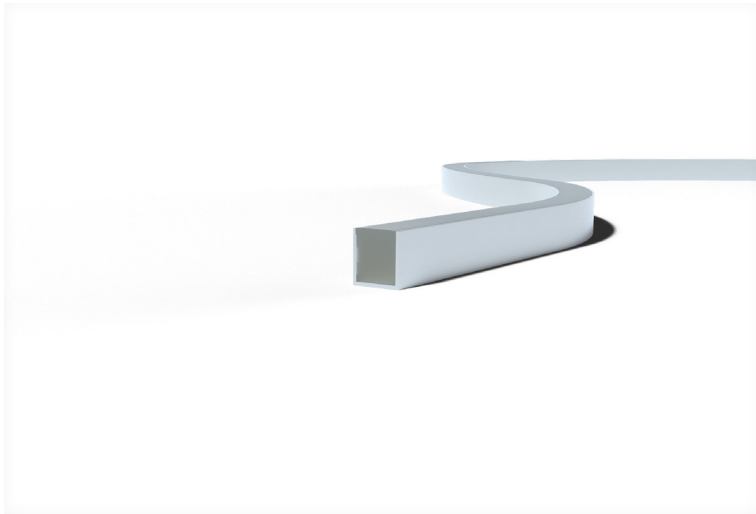




# NEON PRO S1617

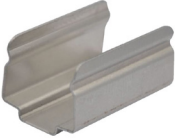


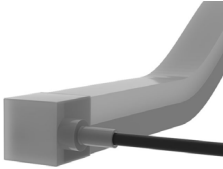






## Specifications

Wattage	15W/m
Voltage	DC24V
Dimensions	(W) 16mm x (H) 17mm
Cut Length	55.5mm
CCT	2700K/3000K/3500K/4000K/5000K/ Solid Colours/RGB
Beam Angle	160°
IP Rating	IP67
Luminous Flux	475lm/m
CRI	>92+/98
Accessories	Surface Mounting Clip, Mounting Profile, Front Power End Cap, Side Power End Cap, Bottom Power End Cap, End Cap, Self Locking Profile, Self Locking Clip
Control Gear	Non Dimmable, 1-10V, TRIAC, DALI, RGB Controller, DMX

Warranty 5 years

## Product Accessories

<p>Surface Mounting Clip</p> 	<p>Mounting Profile</p> 	<p>Front Power End Cap</p> 	<p>Side Power End Cap</p> 
<p>Bottom Power End Cap</p> 	<p>End Cap</p> 	<p>Self Locking Profile</p> 	<p>Self Locking Clip</p> 

## Product Code

Example - NEON.S1617.15.27.160.67.92.NDM

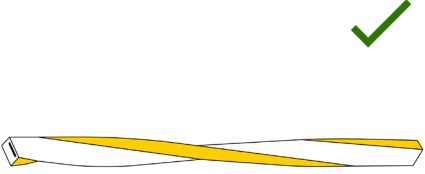
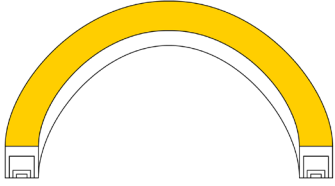
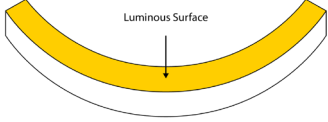
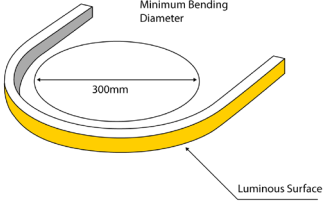
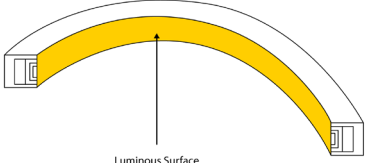
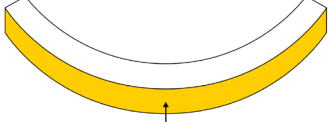
Product Name	Wattage	CCT	Beam Angle	IP Rating	CRI	Control Gear
NEON.S1617	15(W/m)	27 (00K) 30 (00K) 40 (00K) 50 (00K) SCL (Solid Colour) RGB (RGB)	160(°)	(IP)67	(>)92(+) 98	NDM (Non-dimmable) 1-10V (1-10V) TR (TRIAC) DA (DALI) RGBC (RGB Controller) DMX (DMX)

## Product Accessory Code

Example - NEON.S1617.SFMC

Product Name	Accessories
NEON.M0612	SFMC (Surface Mounting Clip) MTPF (Mounting Profile) FPEC (Front Power End Cap) SPEC (Side Power End Cap) BPEC (Bottom Power End Cap) EDCP (End Cap) SLKP (Self Locking Profile) SLKC (Self Locking Clip)

# Bending Diagram

 <p>A straight light fixture is shown in a perspective view. A green checkmark is located in the top right corner of the cell.</p>	 <p>A light fixture is bent into a 180-degree arc. The luminous surface is highlighted in yellow. A green checkmark is located in the top right corner of the cell.</p>	 <p>A light fixture is bent into a shallow curve. The luminous surface is highlighted in yellow. An arrow points to the inner curve with the label "Luminous Surface". A green checkmark is located in the top right corner of the cell.</p>
 <p>A light fixture is bent into a tight loop. A dimension line indicates a "Minimum Bending Diameter" of "300mm". The luminous surface is highlighted in yellow. A red X is located in the top right corner of the cell.</p>	 <p>A light fixture is bent into a wide arc. The luminous surface is highlighted in yellow. An arrow points to the inner curve with the label "Luminous Surface". A red X is located in the top right corner of the cell.</p>	 <p>A light fixture is bent into a shallow curve. The luminous surface is highlighted in yellow. An arrow points to the inner curve with the label "Luminous Surface". A red X is located in the top right corner of the cell.</p>