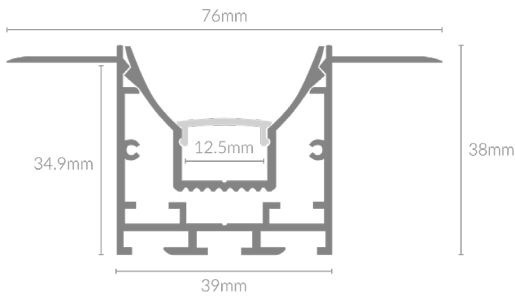
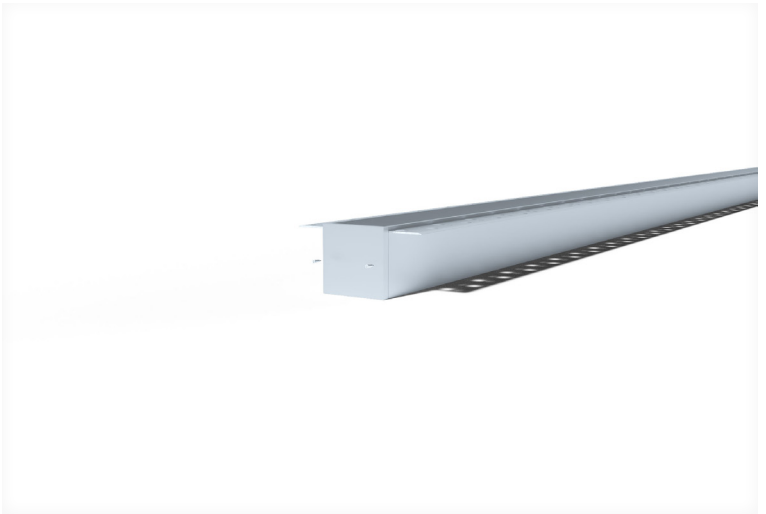
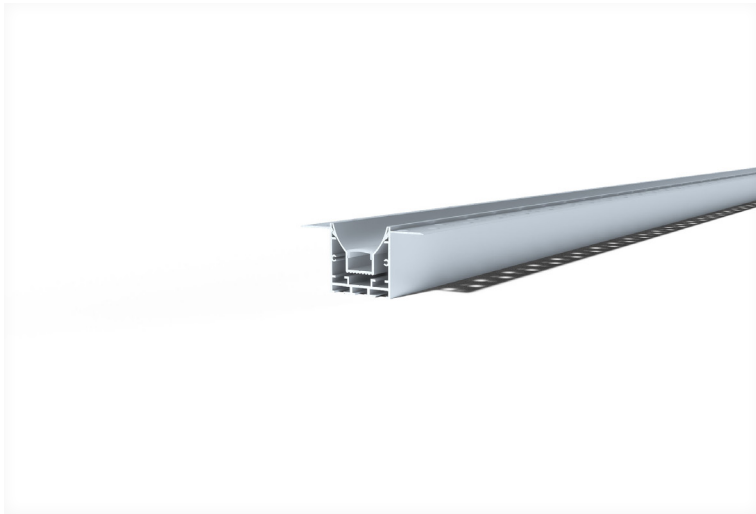









# LP PR3938



## Specifications

Mounting	Plaster Recess Mounted
Dimensions	(W) 76mm x (H) 38mm
Length	2000mm,2500mm,3000mm
Finish	Anodized Aluminium, Black, White, Custom Powdercoat
Extrusion Material	Anodized Aluminium
Diffuser Material	Polycarbonate
End Cap Material	Polycarbonate
Accessories	End Caps, PC Diffuser, PC Diffuser Black, Connector Plate
Warranty	3 years

## Product Accessories

<p>End Caps</p> 	<p>PC Diffuser</p> 	<p>PC Diffuser Black</p> 	<p>Suspension Kit</p> 
<p>Connector Plate</p> 			

## Product Code

Example - LP.PR3938.2000.BLK

Product Name

LP.PR3938

Length

2000 (mm)

2500 (mm)

3000 (mm)

Finish

BLK (Black)

WHT (White)

ANZ (Anodized)

CTM (Custom)

## Product Accessory Code

Example - LP.PR3938.ENDC

Product Name

LP.PR3938

Accessories

ENDC (End Caps)

PCDC (PC Diffuser)

PCDB (PC Diffuser Black)

SPKT (Suspension Kit)

CNPT (Connector Plate)