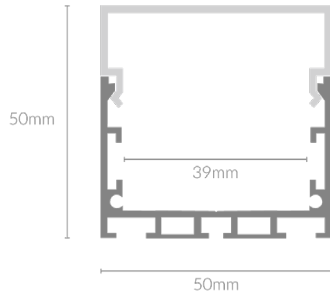
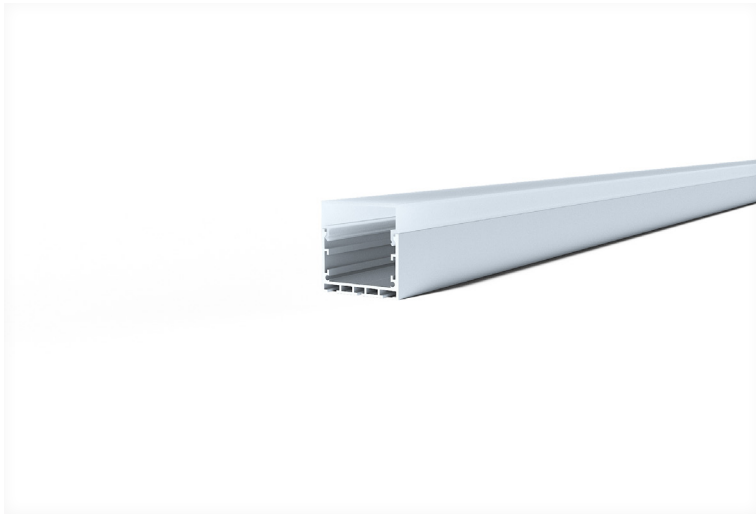




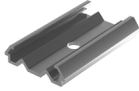




LP S5050



Specifications

Mounting	Surface Mounted
Dimensions	(W) 50mm x (H) 50mm
Length	2000mm,2500mm,3000mm
Finish	Anodized Aluminium, Black, White, Custom Powdercoat
Extrusion Material	Anodized Aluminium
Diffuser Material	Polycarbonate
End Cap Material	Polycarbonate
Accessories	Profile Clip, End Caps, PC Diffuser, Suspension Kit, Connector Plate
Warranty	3 years

Product Accessories

<p>Profile Clip</p> 	<p>End Caps</p> 	<p>PC Diffuser</p> 	<p>Suspension Kit</p> 
<p>Connector Plate</p> 			

Product Code

Example - LP.S5050.2000.BLK

Product Name

LP.S5050

Length

2000 (mm)

2500 (mm)

3000 (mm)

Finish

BLK (Black)

WHT (White)

ANZ (Anodized)

CTM (Custom)

Product Accessory Code

Example - LP.S5050.PRFC

Product Name

LP.S5050

Accessories

PRFC (Profile Clip)

ENDC (End Caps)

PCDC (PC Diffuser)

SPKT (Suspension Kit)

CNPT (Connector Plate)